



Hogwarts Accessory Kit Installation Instructions (Battery Powered Kit)

This guide describes how to install the battery-powered Accessory Kit for the LEGO® Hogwarts Castle.

Written By: Rob K



Step 1 — Using This Guide (Viewing/Translating)



- There are several ways to read this guide:
 - Reading it on the web in your browser.
 - Downloading a PDF copy of the guide. You can do this by selecting "Download PDF" as shown by the red rectangle in the first photo. Click on the Options heading in the upper right corner of the screen (see the green rectangle).
 - In the "Dozuki" application, which is available for download from the [Apple App Store](#) and various [Android and Google marketplaces](#).
- ❗ If you view this guide in the Dozuki app, search for "Brickstuff" the first time you open the app, then select "Product Guides" from the categories listed under Brickstuff. Scroll down to find this guide.
- **You can also translate this guide into another language when viewing on the web. To do this, install a translator extension into your browser and use that extension/plugin to translate the page. Using the main Google translate website (translate.google.com) does not work.**

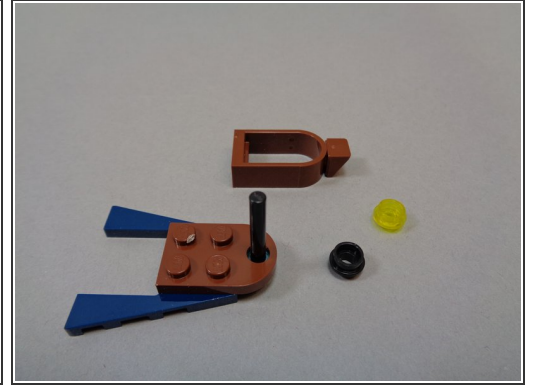
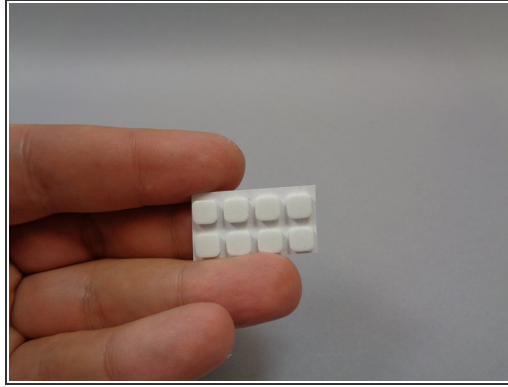
Step 2 — Parts Included In Your Kit



⚠ This accessory kit requires the [Brickstuff light + sound kit for the LEGO® Hogwarts Castle](#). Before proceeding with this guide, make sure you have completed installing the main kit and that all of the lights in the main kit are working.

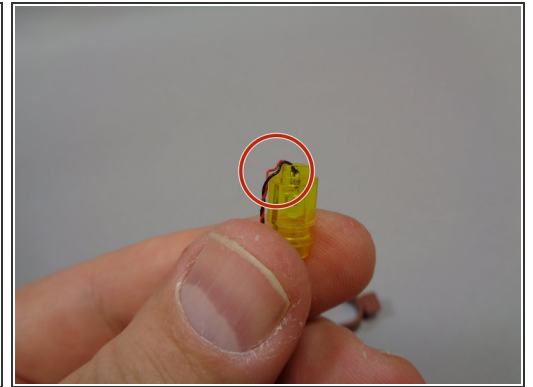
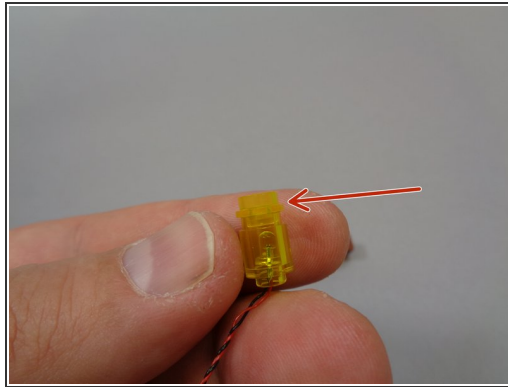
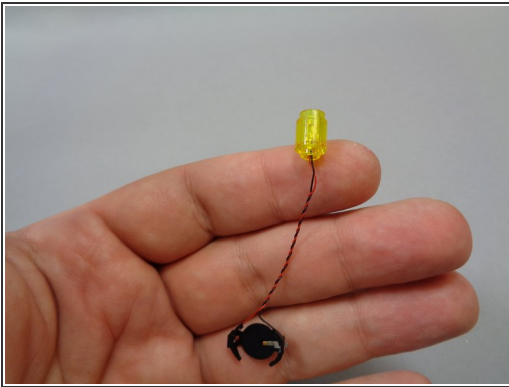
- The photo in this step shows the parts included with your kit. You should have:
 - One sheet of small sticky squares
 - Five bags labeled "Boat Lanterns- - Battery Powered"
 - One bag labeled "Hagrid's Hut-- Battery Powered"
 - One bag labeled "Whomping Willow-- Battery Powered"
 - One bag labeled "Accessory Kit-- Batteries"

Step 3 — Disassemble the Boats



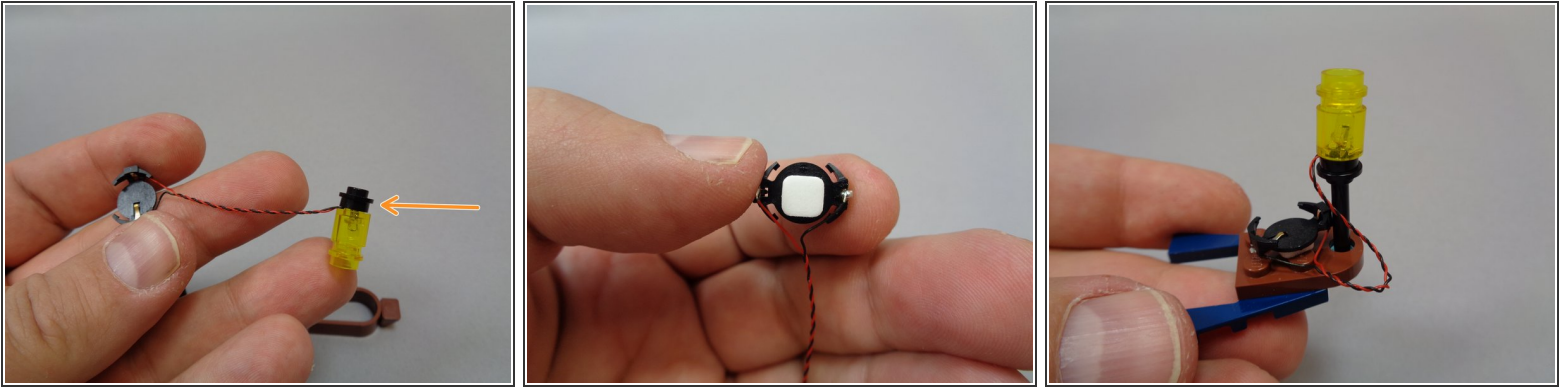
- You will begin with the five boats. You will need the five bags of boat lanterns, five sticky squares, and five batteries.
- As shown in the third photo, disassemble each of your five boats as shown.

Step 4 — Prepare Each Lantern



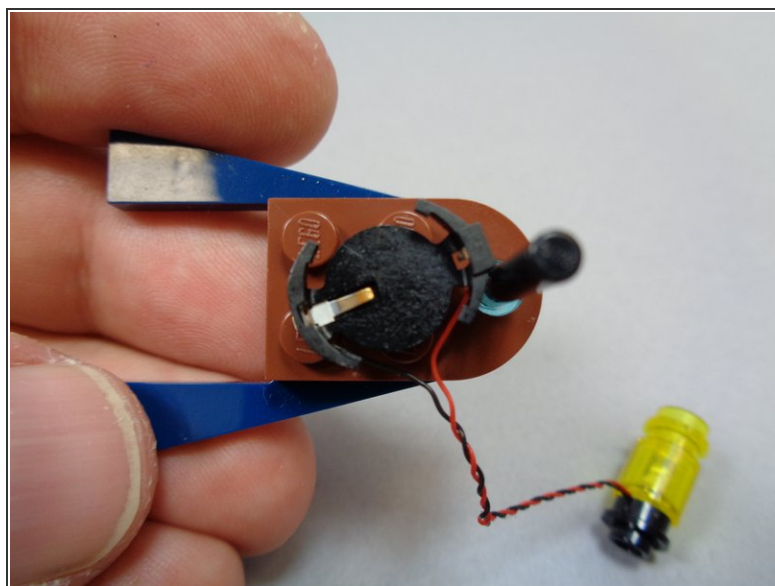
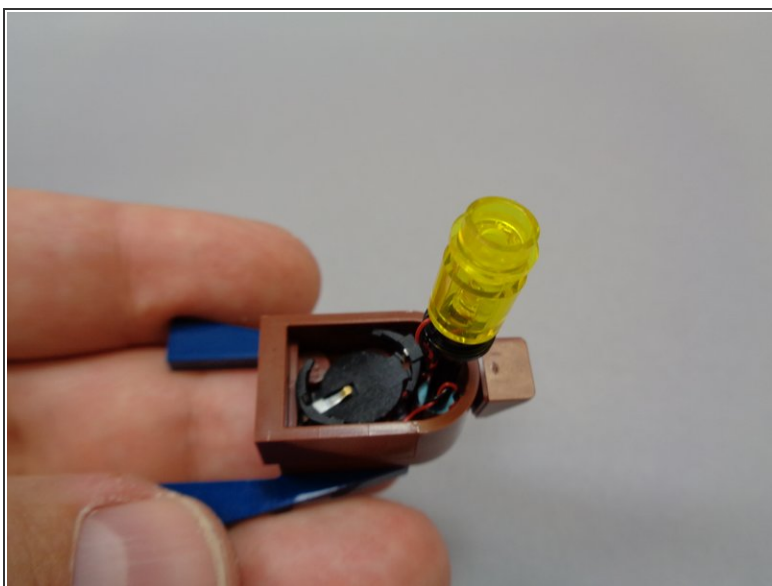
- For each of the five boats, remove the lantern and battery assembly from its bag.
- As shown by the red arrow in the second photo, attach the transparent yellow round 1x1 plate to the top of the pre-lit lantern assembly.
- As shown by the red circle in the third photo, bend the light wire with your fingernail so it runs down the side of the stud on the bottom of the pre-lit lantern assembly.

Step 5 — Attach the Battery Holder



- As shown in the first photo, re-attach the round black 1x1 plate to the bottom of the lantern assembly. (orange arrow)
 - As shown in the second photo, attach a sticky square to the bottom side of the battery holder.
 - Mount the battery holder in the base of the boat, and attach the lantern assembly to the top of the black rod as shown in the third photo.
- i** Note that you will need to mount the battery pack slightly off-center and angled, as shown in the third photo. This is necessary to allow room to re-attach the edge piece of each boat.

Step 6 — Test-Fit the Boat Frame



- As shown in the first photo, test-fit the boat frame to make sure the battery pack is positioned to allow enough room for the frame to re-attach.
- ① If necessary, re-position the battery pack to allow the boat frame to re-attach firmly.

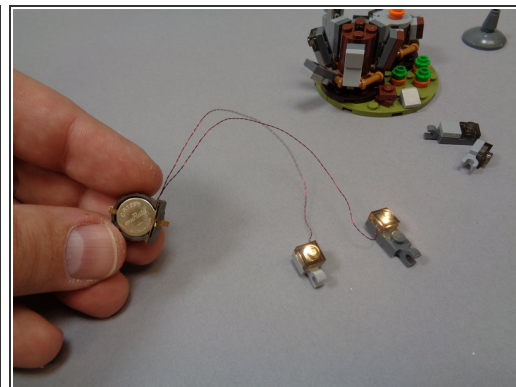
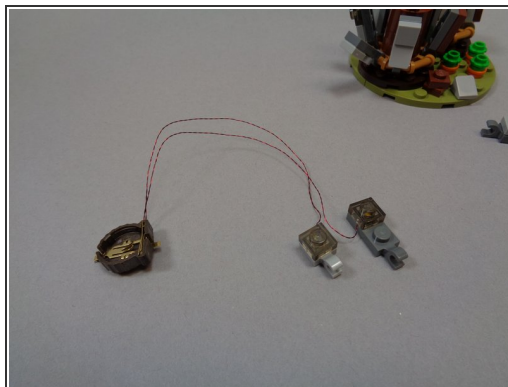
Step 7 — Finish Mounting the Light and Test



- Insert a battery into the holder, and the lantern should turn on and begin flickering.
- Repeat this process for the remaining four boats.
- ① You may need to press the battery in firmly to get the light to turn on.
- ① To turn off the light, remove the boat frame and gently press up on the battery until it pops out of the holder.
- ① Batteries should last 6-8 hours under normal use. When you need to replace batteries, look for the CR1220 size.

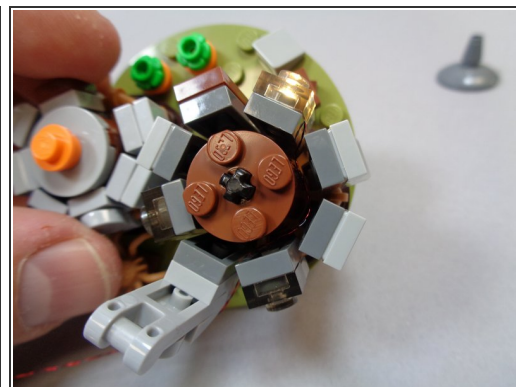
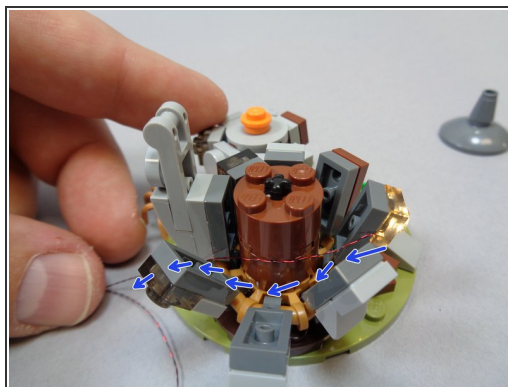
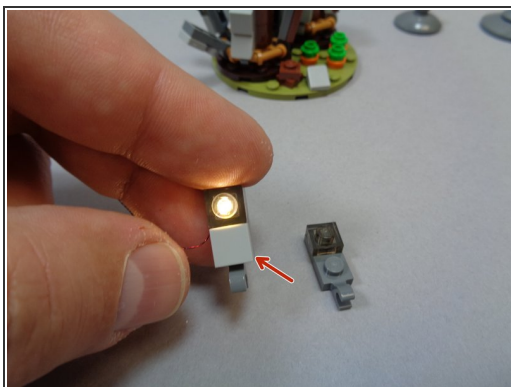
⚠ Keep batteries away from children. Batteries are very small and are hazardous if swallowed. Follow your city's recycling guidelines for disposing of used batteries.

Step 8 — Prepare Hagrid's Hut Lights



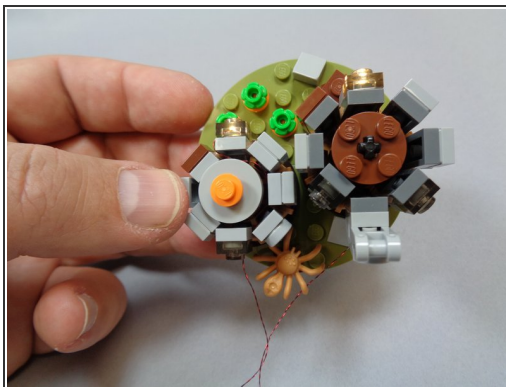
- Remove the Hagrid's Hut light assembly from its bag. You should have two lights mounted inside LEGO® pieces and attached to one battery holder as shown in the second photo.
- Insert a battery into the battery holder. You should see both lights come on as shown in the third photo.

Step 9 — Mount the Lights in Hagrid's Hut



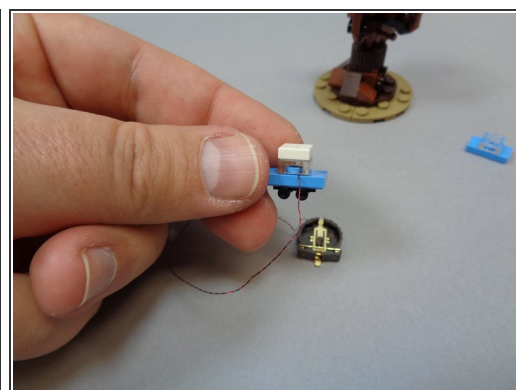
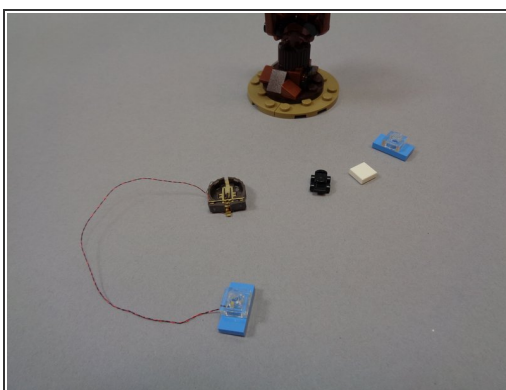
- Remove the two roofs from Hagrid's Hut, and remove the front window piece. As shown in the first photo, take the light bluish gray 1x1 LEGO® tile and switch it onto the pre-lit replacement window (red arrow).
- Re-attach the large front window piece and run the light wires around the center core as shown by the blue arrows in the second photo.
- Re-position all pieces around the large hut. You should now have your mounted light with the wire extending out the back of the hut as shown in the third photo.

Step 10 — Continue Mounting the Lights in Hagrid's Hut



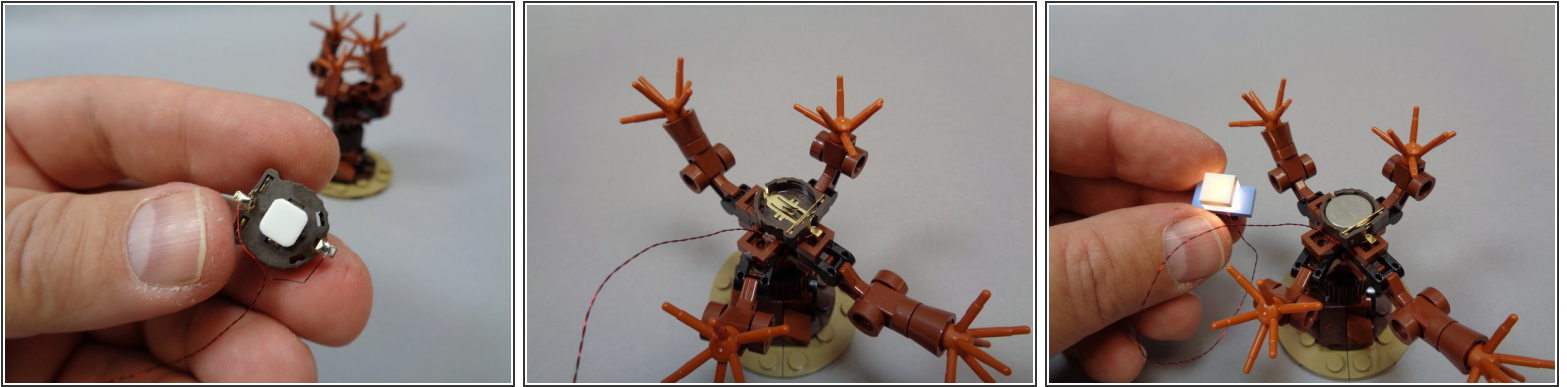
- Repeat the same process for the smaller window as shown in the first photo.
- As shown in the second photo, you should now have all side pieces re-positioned with both lights in the front section and two wires coming out the back of the huts.
- As shown in the third photo, re-attach the two roofs. Your hut is now complete.
- ❗ To turn the lights off, pinch the gold bar holding the battery in place until it pops out of the holder.

Step 11 — Prepare the Whomping Willow



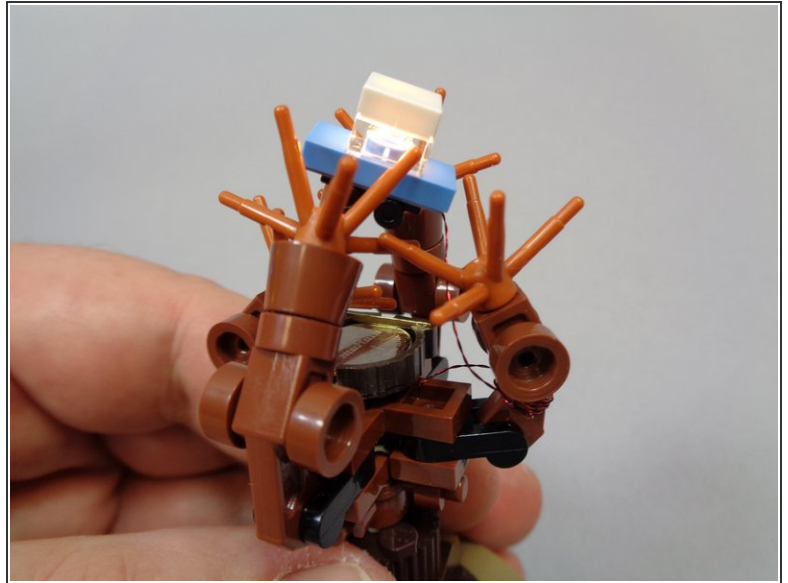
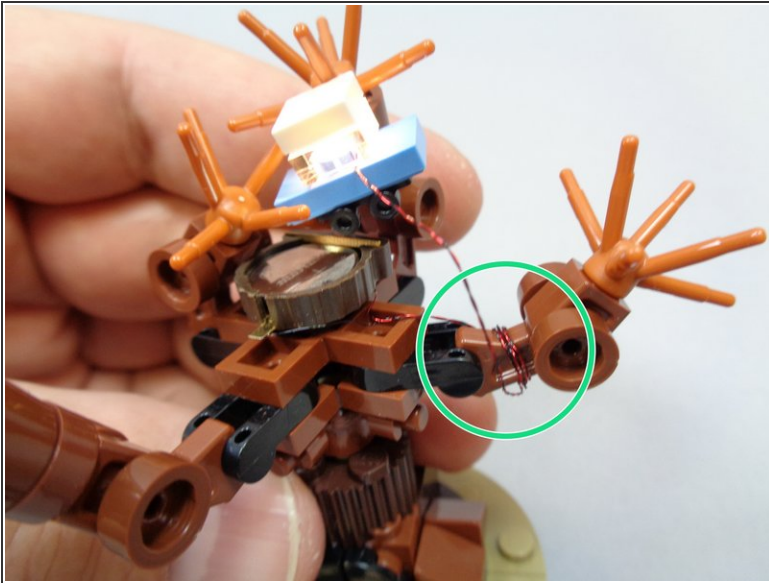
- Take the pre-lit car and battery holder assembly out of its bag, and as shown in the second photo, remove the white top and black wheels from the car in your LEGO® set and transfer them to the pre-lit car as shown in the third photo.

Step 12 — Mount the Whomping Willow Light



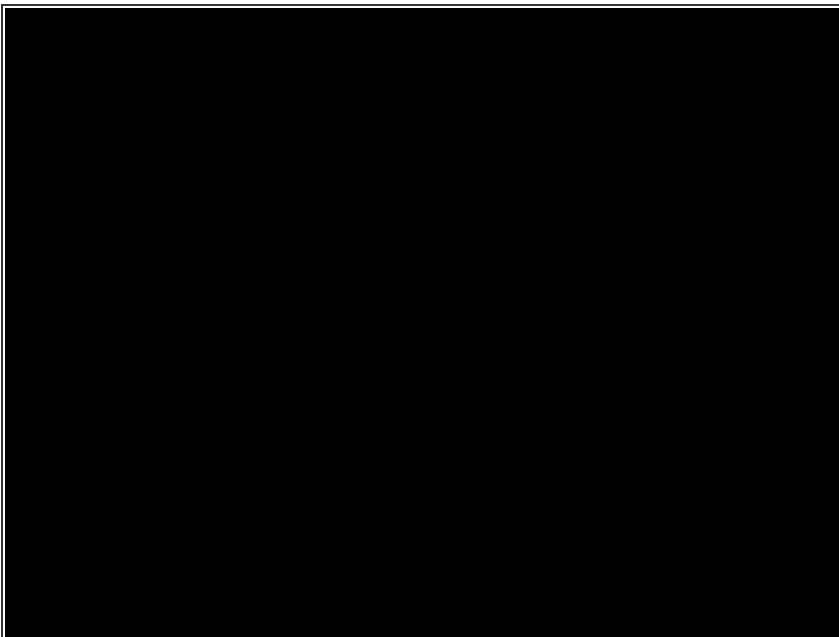
- As shown in the first photo, take one of the sticky squares and attach it to the back side of the battery pack.
- As shown in the second photo, spread the tree branches so you can stick the battery pack in the center of the tree.
- Insert a battery into the holder and the light in your car should turn on as shown in the third photo.
- To turn the light off, pinch the gold bar holding the battery in place until it pops out of the holder.

Step 13 — Finish Mounting the Whomping Willow Light



- As shown in the first photo, wind the light wire around one of the branches to take up any slack.
- Position your lit car inside the branches, and you are all set! Because the battery is mounted in the top section of the Willow, you can still spin it around while the light is on.
- To turn the light off, pinch the gold bar holding the battery in place until it pops out of the holder.

Step 14 — Complete!



- The video in this step shows a demonstration of how your lights should look after installation and with all batteries inserted.

⚠ Keep batteries away from children. Batteries are very small and are hazardous if swallowed. Follow your city's recycling guidelines for disposing of used batteries.

